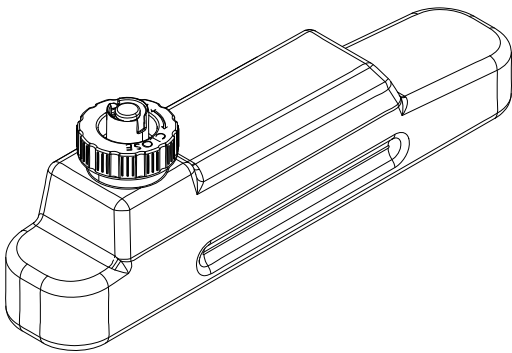
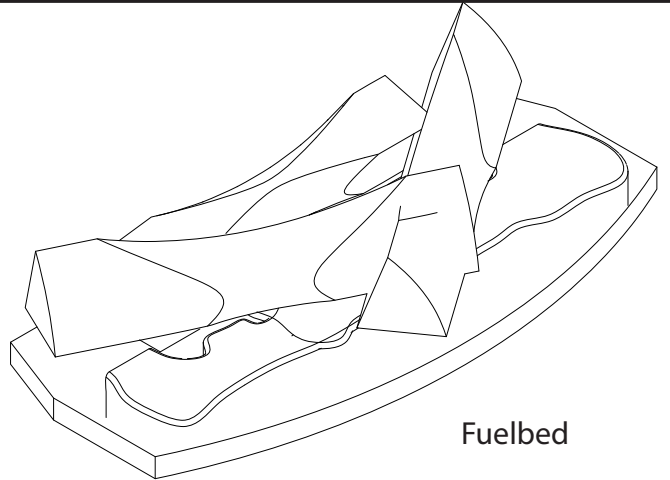


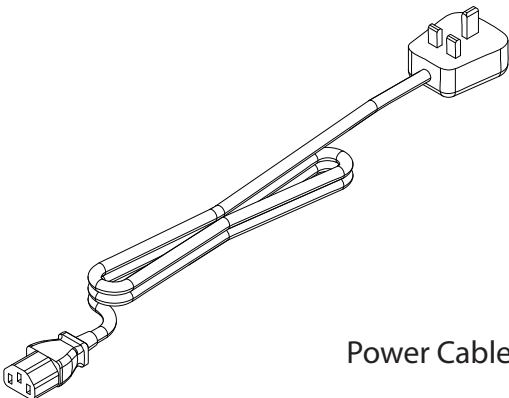
Inner Carton contains the following items;  
Water Tank, Fuelbed, Power Cable, Set of 4 Lamps,  
Remote Control Handset + 2xAAA Batteries and  
Transducer Unit



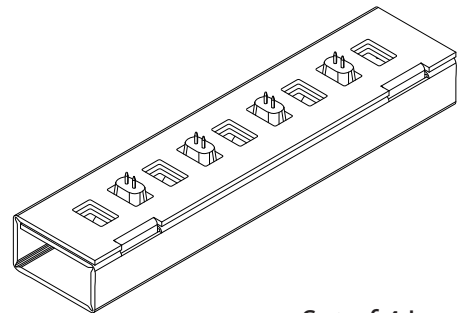
Water Tank



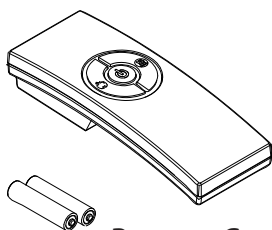
Fuelbed



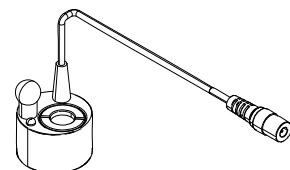
Power Cable



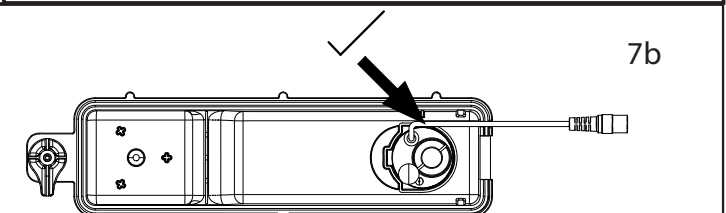
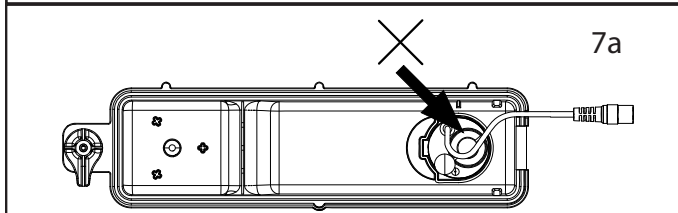
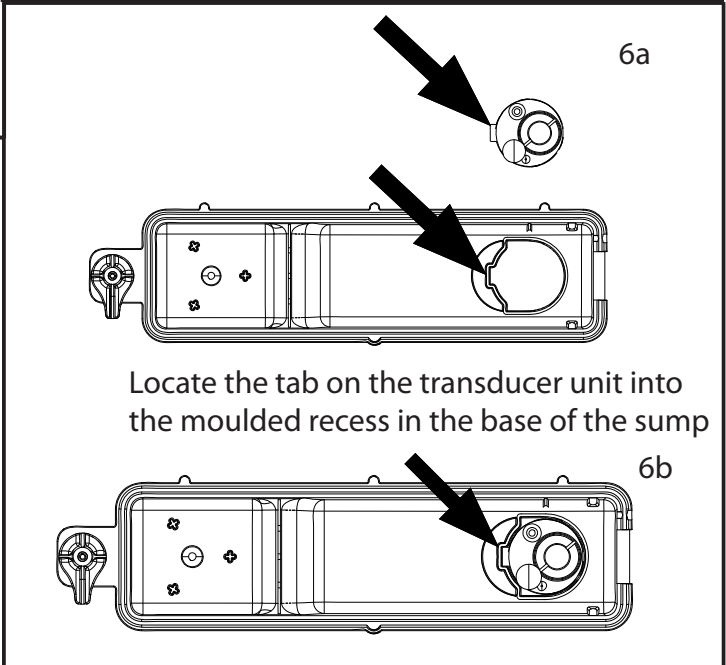
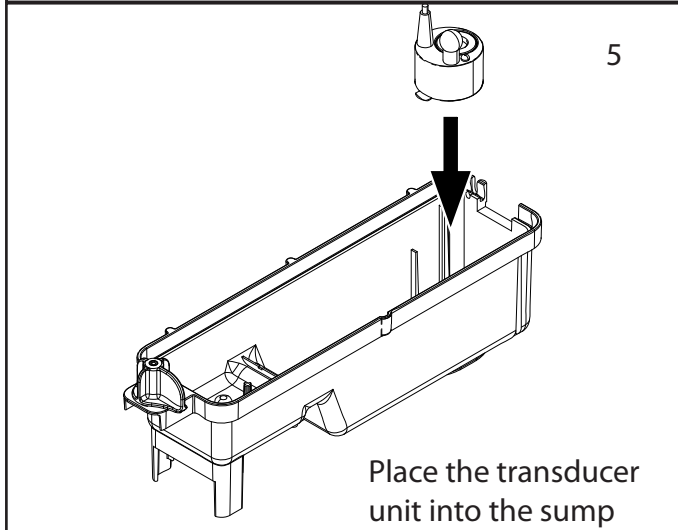
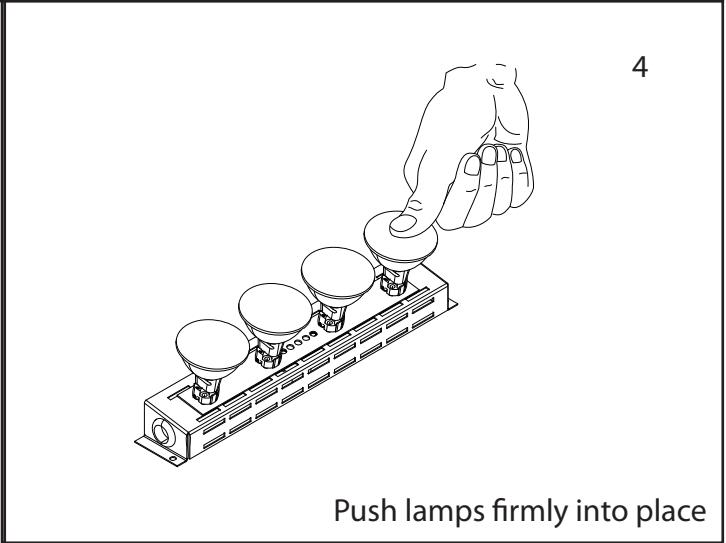
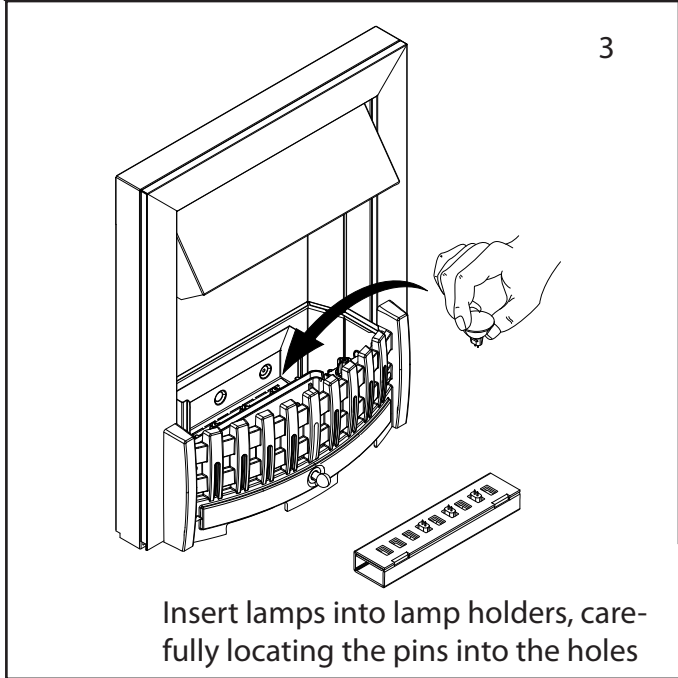
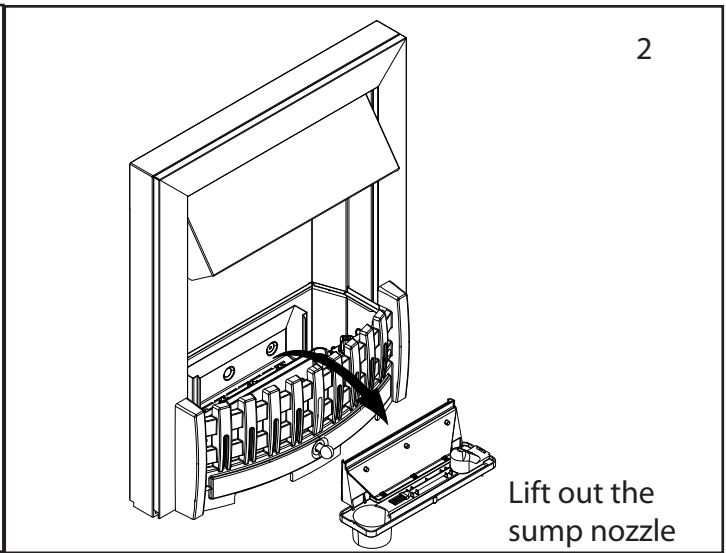
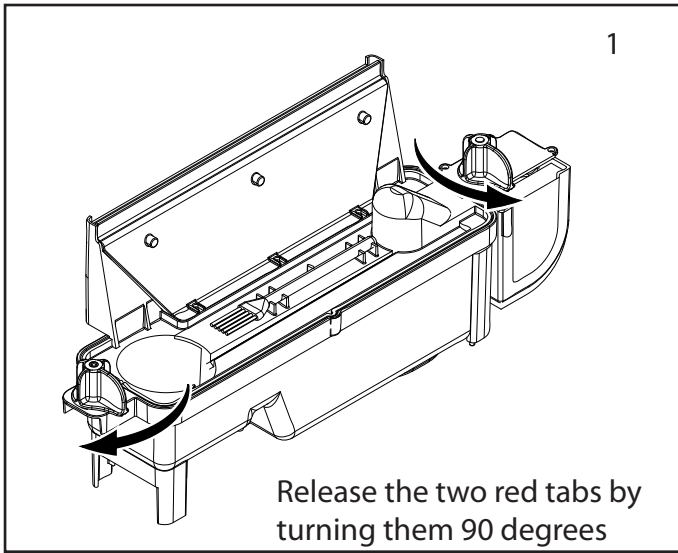
Set of 4 Lamps



Remote Control Handset +  
2xAAA Batteries



Transducer Unit



Ensure that the cable does not obstruct the Transducer Disc. To prevent the cable becoming pinched between the nozzle and the sump, place the cable in the slot in the wall of the sump.